



Unrivalled Integrated Security and Access Control
using

Concept 4000

Hardware Platform

Insight

Management Software



CONCEPT 4000

Insight

The Concept 4000 hardware platform, combined with the Insight software suite, delivers unrivalled integrated security and access control.

Panels can be seamlessly linked to deliver centralised multi-site management with unlimited dimensions.

Seamless Integration of Intruder Alarm and Access Control

Wonderfully powerful as either a state of the art intruder alarm system, or a fully featured access control system, our solution is without peer when the specification calls for seamless integration of these two disciplines.

As an intruder system it sets a new benchmark. Thousands of areas, thousands of inputs and outputs, powerful macro-logic, TCP/IP connectivity and an array of flexible reporting options.

As an access system it offers all of the leading product functionality that you would expect in a state of the art enterprise level solution. Hundreds of thousands of users, multiple card formats, lift control, and module redundancy that will maintain full functionality, even in the event of complete server failure.

A truly worthy contender in either an intruder or access only role, but it is through the integration of these two applications that the system delivers its compelling advantages: Reduced equipment cost, lower installation and maintenance costs, simpler and more practical system management, complementary functionality to name just a few.

Concept hardware coupled with Insight software delivers an unrivalled and truly unique, integrated solution.

Massive Scalability

The Concept 4000 hardware platform begins as a single control panel with 16 inputs.

The flexible, modular design allows the expansion of a single control panel to a network of hundreds of modules, 50,000 users, 2000 inputs, 250 areas and 250 doors.

Insight software can then seamlessly link multiple control panels together to create a system of almost infinite dimensions: over 1,000,000 users, across thousands of inputs, areas, doors and outputs.

This scalable philosophy gives a cost effective solution that can grow with your needs yet is unconstrained by design limits.

The modular design of the Concept 4000 hardware platform ensures that you only pay for what you need, when you need it.



Powerful Programming Flexibility

Experienced security professionals understand that every site has different needs and requirements. Concept 4000 and Insight have developed a well deserved reputation as the system that can always deliver - even on the most fastidious customer requirements.

Concept 4000 and Insight offer an impressive array of group and list programming options that allow the detailed manipulation of all user and system functionality. Powerful custom logic can additionally be implemented across hardware modules and all levels of the programming to deliver solutions only dreamed of in other single discipline product offerings. Arguably the most impressive characteristic of our offering is that all of this power is available at hardware level and will perform flawlessly even in the event of server failure.

Unbeatable access, security and communications functionality to satisfy the most stringent security requirements.

Extensive Third Party Integration

The Concept 4000 / Insight solution offers an extensive range of high level integration options to many other leading vendors in areas such as building management, automation, lift control, ERP and payroll systems.

The Concept 4000 control module hardware has the ability to interface with up to four independent systems simultaneously. Additionally, the Insight software supports various proprietary interfaces and a customisable COM interface. For quick, one-off applications we offer a keystroke emulator LAN module that accepts ASCII commands.

Sophisticated Multi-site Architecture

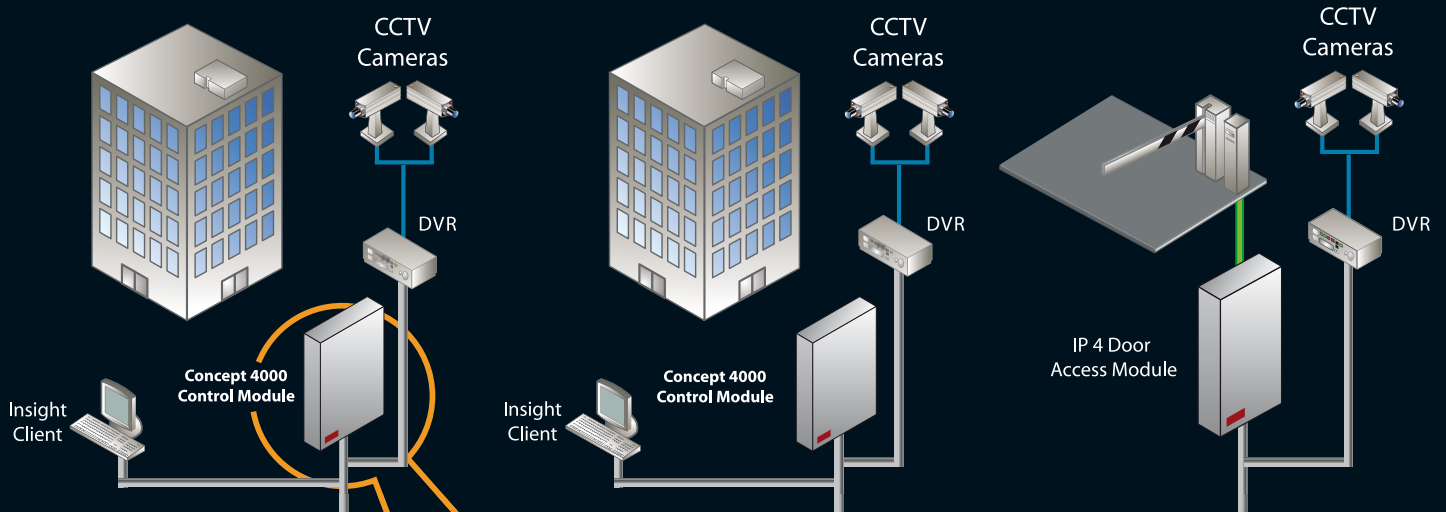
Using our Insight management software it is possible to bring an almost unlimited number of Concept 4000 sites together into one virtual system for global administration. Users can be added and deleted from the system, security levels changed, and user access to doors and security areas modified with changes being dynamically updated to sites anywhere in the world. Interactive, multi-layer graphical maps can show the status of the system as a whole, with the ability to drill down to an individual room in an installation and view live activity.

Breathtaking high-level video integration finally providing intruder alarm, access control and CCTV in one 'state of the art' solution.

Breathtaking CCTV and DVR Integration

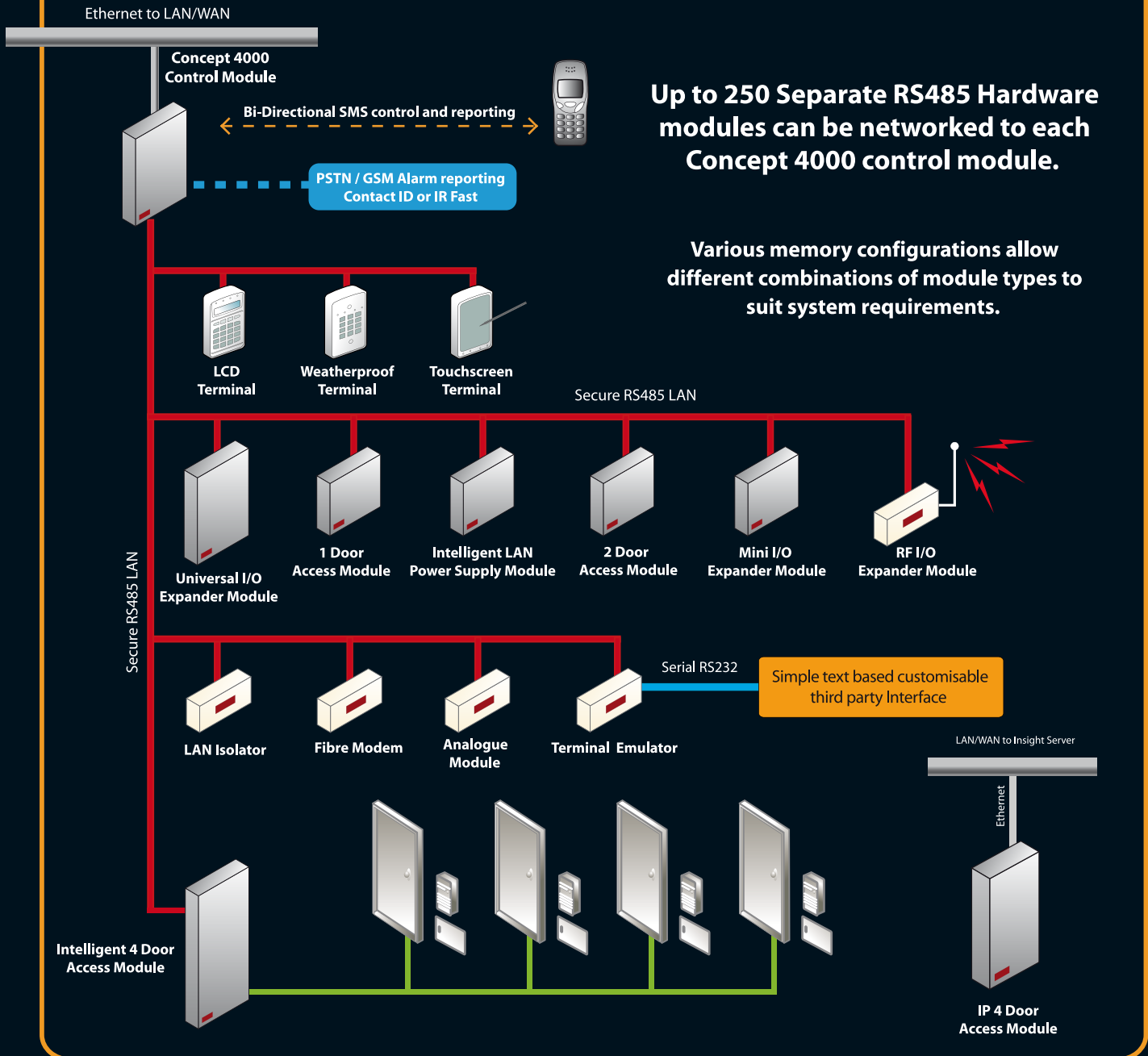
With Insight software, high-level video integration is now a reality. The interface supports a large number of leading CCTV vendors. Finally, intruder alarm, access control and CCTV are now combined in one, "state of the art" solution.

Concept 4000 / Insight - Integrated Security Management

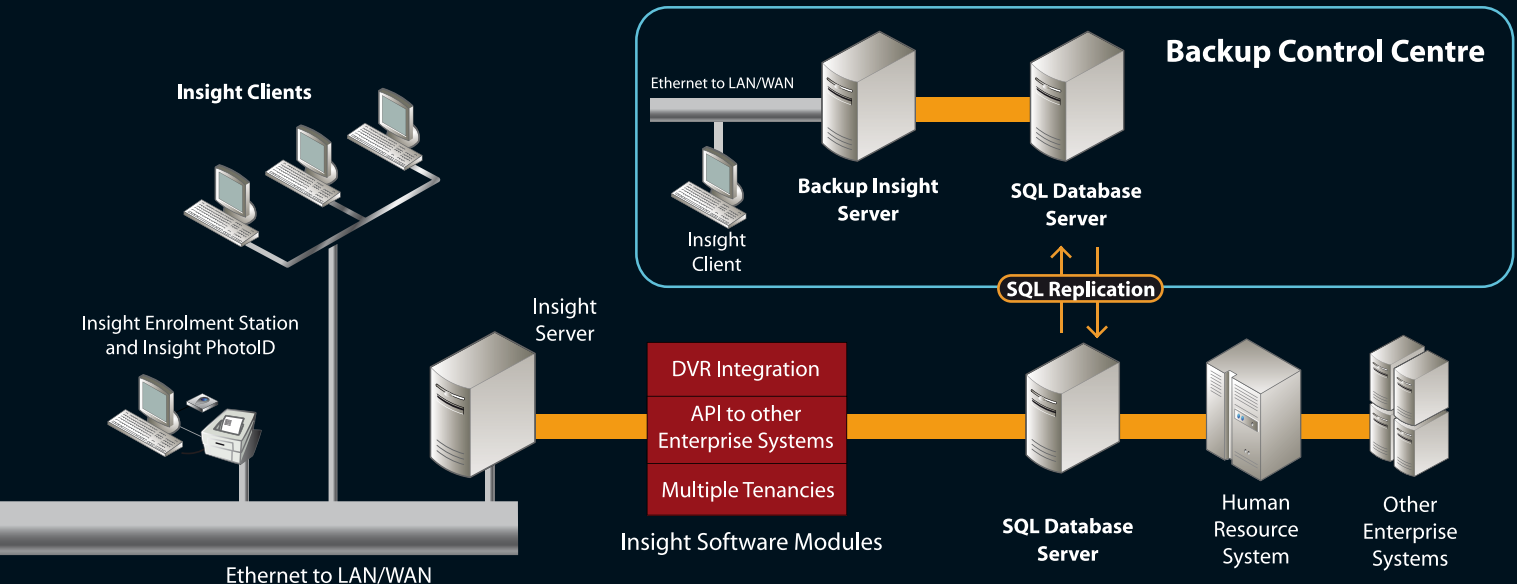


128bit AES Encrypted - Local or Wide Area Network (TCP / IP)

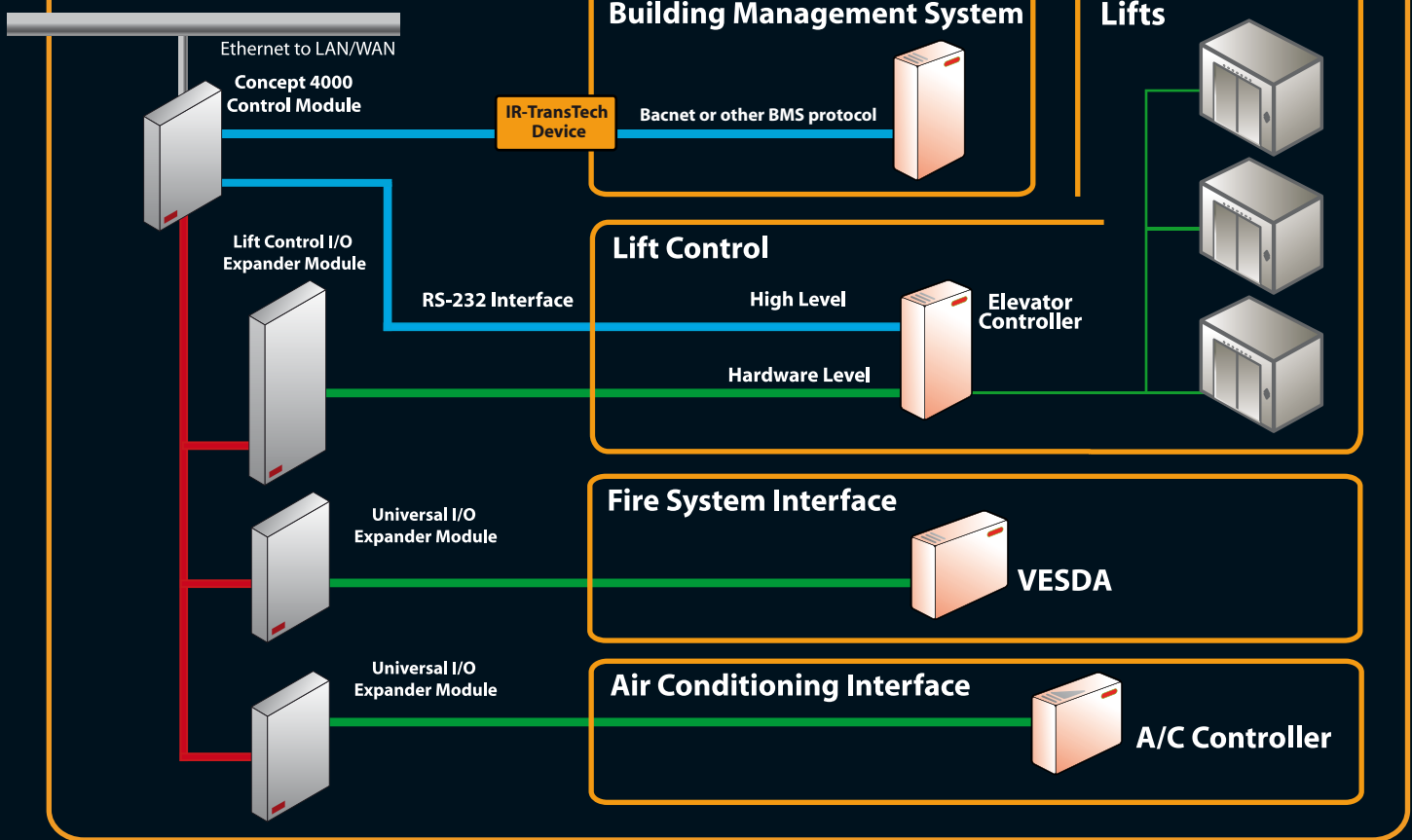
Concept 4000 Integrated Security / Access Hardware Platform



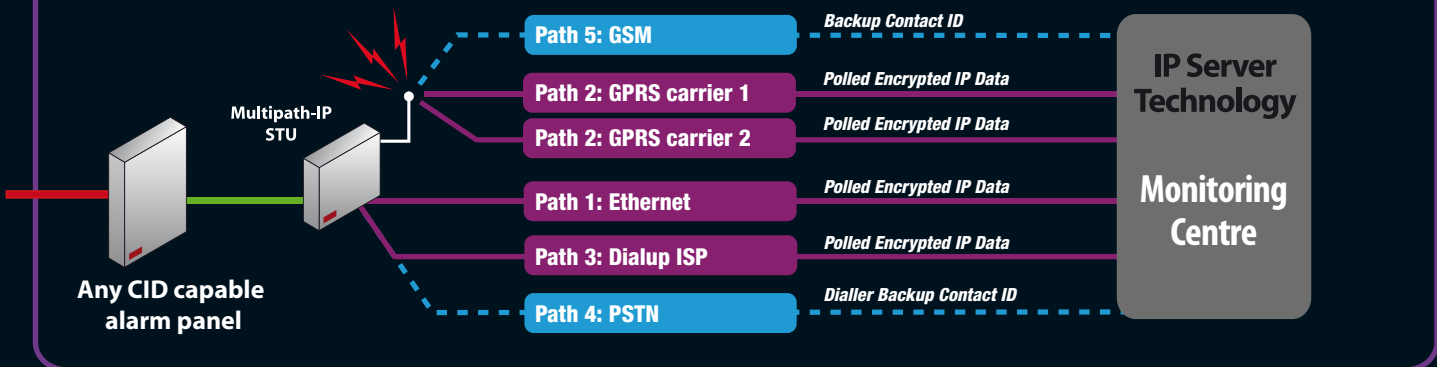
System Architecture



Third Party System Interfacing



Inner Range High Security Remote Monitoring Option





Management Software for Concept 4000 Systems

Insight Professional is a "best in class" system management software solution providing customers with user friendly control and management of multiple Concept 4000 systems.

User Friendly Programming and Control

Operators can edit programming of items such as users, doors and lifts within multiple Concept 4000 panels.

Programming features include:

- User friendly programming screens
- Control of doors, areas, lifts and auxiliary outputs etc.
- Powerful search and cross-referencing tools
- Hyperlinks to move between related programming screens

Robust Architecture

Insight is built on a robust technology platform including:

- Multi-panel, multi-workstation (multi-client)
- MS SQL server database - ODBC compatible
- Rijndael AES 128-bit encryption
- Proprietary Insight communications protocol developed specifically for IP based communications

Seamless Multi-Site Management

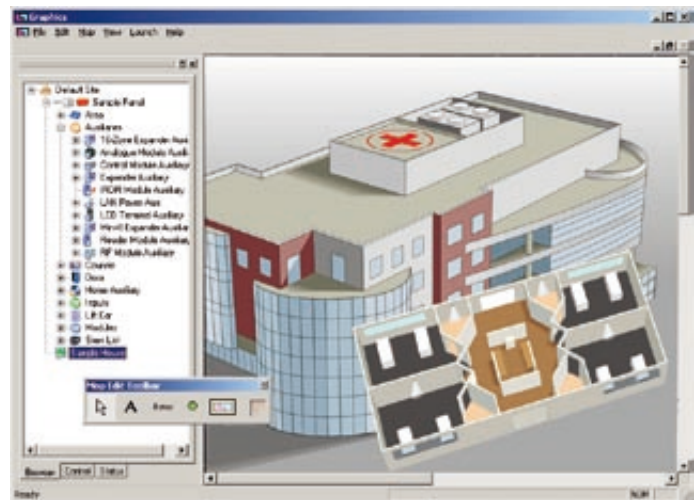
Sites can be managed individually or an almost unlimited number of Concept 4000 sites can be managed as one seamless system with the intuitive Insight software suite. Global user management means that users can be added and deleted from the system, their security levels changed, and their access to doors and security areas modified with these changes being immediately updated to sites around the globe.

Rich Floorplan View

Insight's Schematic module provides the facility to monitor the status of field hardware and site security on an interactive, multi-layered, graphical representation.

Some of the highlights of the Schematic module are:

- Import maps in a variety of formats
- Create drill downs and navigational hyperlinks
- Automatically display a schematic in response to a programmed event
- Mimic control panel functionality
- Drag and drop items onto maps
- View the real-time status of inputs, areas, doors and auxiliaries
- Customizable icon library



Comprehensive Reporting

A range of customisable reports are available in Insight, giving the user great flexibility to generate reports for all requirements. Reports are easily exported to other applications.

Some examples of popular reports are:

- User access through a door
- Alarms in an area
- User arming/disarming of an area

Further flexibility is afforded by the Advanced Reporting Module, which adds:

- Muster report
- Time on site report
- Report designer tool allowing total control over report output

Flexible Review, Alarm and Event Management

Insight automatically maintains a merged log of alarm and system events generated by all Concept 4000 modules on the network. Operator actions within Insight are also logged.

Certain Review events can be forwarded as pager, SMS, email or Internet messages

The review module also includes:

- Unlimited customisable review filters
- Unlimited concurrent review windows
- Comprehensive event triggering
- Customisable alarm events and alarm procedures (including font and colour control)
- Operator response processing including systemwide acknowledgement

The Insight Communicator Module automatically processes selected types of Review events and sends email, pager and SMS messages.

Granular Operator Permissions

Insight gives the system administrator unprecedented control over an operators' system permissions.

- Assignment of permissions via operator types
- Assign more than one operator type to each operator
- Flexible permissions: (view, inspect, change, create, delete, control, print, export and set)

An unlimited number of Concept 4000 sites can be managed as one seamless system with the intuitive Insight software.

Interface with Third Party Applications

Insight offers an extensive range of high level integration options to other leading technology vendors.

Insight third party integration includes:

- Dynamic User Import Module for hotel management systems
- Payroll interface for systems such as MYOB
- .CSV files for importing and exporting user data
- Generic COM interface that can be customised to third party system requirements

Insight Components

Insight Professional

Core package providing site management, panel programming, event review, floor plan functionality, basic reporting, operator and user administration.



Breathtaking DVR/CCTV Integration

Insight DVR Integration allows operators to control Digital Video Recorders and cameras, including the ability to view live and historical video feeds.

This Integration includes:

- Remote control of PTZ (Pan/Tilt/Zoom) cameras
- Access to historical video information based on system review log events
- Switching of cameras and video feeds based on custom real-time triggers
- Camera control from Insight Schematic maps
- Support for multiple DVR vendors within a single Insight system
- Create a custom matrix with cameras connected to DVRs from multiple vendors.
- Link cameras to almost any object in the Insight database (doors, inputs, users etc).

One Touch Card Printing

The Insight Photo ID module enables the design and printing of user photo-identification cards within the Insight application.

- Design custom cards of any size and complexity
- Apply fields from the cardholder database
- Print cards individually or in batches
- Compatible with digital cameras and web cameras

Optional Modules

- DVR Integration Module
- Advanced Reporting Module
- Photo-ID Module: Adds card design/print support
- COM and PMS Interfaces
- Card Pool
- Insight Communicator

CONCEPT 4000



Unrivalled Security Power

Each Concept 4000 controller offers powerful intruder alarm functionality:

- Advanced multi-tenancy across 250 areas
- Support for special duress, panic, hold-up and suspicion alarm functions
- Pulse counting and other customised input processing
- Support for a wide range of wireless devices
- Look-ahead reporting feature prioritises new alarms to over-ride multi-break reporting
- Walk test zone inputs
- Automatic daylight saving adjustment
- Telephone line, power supply, battery and fuse monitoring

Third Party Connectivity

The Concept 4000 hardware platform works seamlessly at hardware level with other powerful automation technologies such as:

- AMX Control and Automation Systems
- Clipsal C-Bus Energy Management
- Crestron Control and Automation systems
- Dyalite Intelligent Lighting
- HPM iCONTROL home automation
- Otis and Kone lift control

IR-TransTech Solutions

IR-TransTech solutions set a new benchmark in third party connectivity. These solutions empower system designers and integrators with an almost utopian wish list of high-level integration possibilities. Using this technology Concept 4000 systems can now interact effectively with all major building automation and HVAC communication protocols: **Bacnet, Bacnet/IP, Lonworks, EIB** and **Modbus** to name just a few. Proprietary lift control, Lighting and energy management protocols such as **ABB, Ademco, Honeywell, Siemens** and **Andover** can also now be transmitted to and from your Concept 4000 system using these new transparent devices. Over 150 different protocols are supported.

Enterprise Level Access Control

Concept 4000 caters for a complete range of installations; single door systems through to global multi-site applications.

- Fully intelligent four door access modules provide full offline operation
- Cost effective two door access modules with offline cache functionality
- Fully featured lift control with button feedback, destination reporting and high level interface options
- Soft, hard, or timed anti-pass-back and door interlock - functions across any combination of doors in the system
- Dual user and card + PIN functionality
- Monitoring of door forced, DOTL (door open too long), tongue sense and entry / exit buttons
- Free access options via time zones and area status, etc.
- Area On/Off control from a door reader without PIN codes or terminals
- Extended door access times for disabled users
- User counting facilities
- Site code processing of a large range of Wiegand, magnetic stripe and many other formats
- IR-Secure 40 format offering added security and extended range of site codes
- Dual-format readers supporting IR-Secure 40, HID and other formats
- "Illegal card" and "too many PIN attempts" monitoring

A single Concept 4000 panel provides up to 50,000 users, 250 modules, 250 doors and 250 areas

IR-TransTech modules are factory configurable devices, which sit between the RS-232 port of the Concept 4000 control module and the target system. These devices translate commands and replies between the two systems creating a seamless dialogue that requires no further ongoing technical input.

Standing quite apart from the comprehensive range of high-level standard integration options already available at the Concept 4000 hardware level; these new factory configurable solutions constitute an exciting addition to the powerful armoury of existing Inner Range solutions.

Orders for these customisable solutions can only be placed via direct consultation with the factory.



Advanced Communications and Security Reporting

Concept 4000 is the industry leader in security communications:

- Powerful IP based communications (Ethernet, dial-up ISP and GPRS)
- A single panel can support up to four simultaneous high level communication interfaces
- Reporting in a variety of formats, including: Contact ID, SIA, IRFast, IP (GPRS, Ethernet), GSM SMS and Securitel
- Advanced backup reporting options
- Reporting to multiple central stations and multiple client codes
- Customisation of Contact ID event codes and point numbers on input reporting

Powerful Automation

In addition to the core intruder alarm and access functionality the Concept 4000 provides powerful automation logic that can be used for a varied range of complementary applications such as lighting control, air conditioning control, equipment monitoring, storage locker management and car park management.

- Customisable macro logic allows flexible event triggering
- Analogue input support (temperature, pressure sensors etc.)
- Event counting to trigger alarms

Versatile Customisation

Concept 4000 hardware allows extensive customisation to precisely address a wide range of end user requirements. Sophisticated operations can be implemented via the large range of programming options and the use of spreadsheet style lists and groups.

Unlimited system dimensions when combined with Insight software

Robust Architecture

- Redundant architecture allows full system operation including system wide macro functionality even in the event of server failure
- Encrypted, intelligent RS485 LAN allows hundreds of modules to connect to a single control module
- Non-volatile, 6500 event buffer at system hardware level

User Friendly Control

Full system control is available to end-users with a few simple key presses:

- Customisable LCD terminal with "help" screens
- Powerful diary functionality allows custom messages
- Keypad control by users of lighting, gates or other automation functionality
- RF key fob support
- SMS and DTMF control of areas and outputs

Concept Hardware / Insight Software

Insight Software



Insight Professional is a “best in class” system management software solution providing customers with user friendly control and management of multiple Concept 4000 hardware platforms.

The core package provides site management, panel programming, event review, floor plan functionality, basic reporting, operator and user administration.

Optional Modules

- DVR Integration Module
- Advanced Reporting Module
- Photo-ID Module: Adds card design/print support
- Card Enrolment Station (hardware)
- COM and PMS Interfaces
- Insight Communicator

994402	Insight Professional
994405	Insight Advanced Reporting Licence
994410	Insight DVR Integration Module (allows connection of up to 30 cameras)
994411	Insight Extra DVR Licence (allows connection of an additional 10 cameras for each additional licence with no limit on total number of cameras)
994406	Insight PhotoID Licence
994408	Insight COM Interface Module (Read Only)
994417	Insight COM Interface Module (Write & Control)
994409	Dynamic User Import Module
994412	Insight Card Pool Module
994416	Insight Communicator
994403	Insight Multi Panel Licences
994404	Insight Multi Client Licences
994420	Insight Remote Client Licence
994421	Insight Remote Installer Licence*
994500BlankAU	Insight Card Enrolment Station – No reader fitted
994500WiegAU	Insight Card Enrolment Station – IR Dual-format reader fitted

*Requires Insight Installer Dongle. Contact Inner Range for more information.

Control Module & Options



Concept 4000 delivers unrivalled security power with its integrated combination of intruder alarm, access control, building automation and security communications features.

The Control Module is the foundation of all Concept 4000 hardware systems. The flexible, modular design of the Concept 4000 architecture allows the expansion of a single Control Module to a network of hundreds of modules, 50,000 users, 2000 inputs, thousands of outputs, 250 areas and 250 doors.

The Control Module comes with 16 zone inputs, 2 outputs, an on board switch mode power supply, LAN port, modem, serial port, siren and relay outputs.

995001AU	Concept 4000 (32K) with plugpack in Med LPE
995002AU	Concept 4000 (128K) with plugpack in Med LPE
995001AUPS	Concept 4000 (32K) with transformer in Med LPE
995002AUPS	Concept 4000 (128K) with transformer in Med LPE
995001AUPCB&K	Concept 4000 (32K) short form kit
995002AUPCB&K	Concept 4000 (128K) short form kit

Control Module Memory Options

Installer selectable memory configurations allow optimisation to meet differing project requirements. Further flexibility is afforded with the addition of memory upgrades and special features chips. Custom Configurations can also be purchased to cater for unique site needs.

995015	128K Memory Upgrade Chip
995016	512K Memory Upgrade Chip
995017	32K Memory Replacement chips
995015P8	128K Memory Expansion + Programmable Site Code Support
995016P4	512K Memory Expansion + High Level Lift Interface*
993401	Custom Memory Configuration*
995101AUFULL	Firmware Upgrade

*Please consult Inner Range for more details prior to purchasing items marked with an asterisk.

Control Module Hardware Add-ons

Up to 8 open collector or relay outputs can be added directly to the Control Module with expansion boards. Communications flexibility is enhanced with plug-on UART boards. Serial/Ethernet and serial only versions are available.

The Control Module supports up to four simultaneous communications tasks, allowing the hardware platform to be interacting with an Operator using the Insight software at the same time as communicating with multiple building automation systems.

995055	8 Auxiliary Output Expander Board
995084	8 Relay Expander Board – Control Module Version
995065	1 Port Serial UART
995066	2 Port Serial UART
995068	4 Port Serial UART
995090	Ethernet UART with 1 Serial Port
995091	Multiport Ethernet UART (1 Ethernet, 3 Serial Port)

Terminals

Elite Terminal



The Elite LCD Terminal is the main user interface for the Concept 4000 system. Its 20 key backlit keypad and backlit LCD display allows the user to easily perform typical user operations, review system activity and program all options.

The LCD display allows the use of plain text to guide the user through operations and identify alarms, events and items by name.

995000U	Universal Elite Terminal (ivory)
995000UWH	Universal Elite Terminal (white)
993000	Concept 2000/3000 Bi-Lingual Terminal

Weatherproof Terminal



Sporting a stylish, waterproof, dust proof and vandal resistant brushed aluminium case, the Weatherproof Terminal from Inner Range adds yet more versatility to the Concept 4000 stable of security and access control products.

This device is perfect for gate or door access control in exposed environments. In addition to 1 door access control, users can also separately arm and disarm their alarm system or a portion thereof using the Weatherproof Terminal. Along with the area control, there is visible feedback of "valid / invalid PIN" entry as well as "area armed / disarmed" status.

995010	Weatherproof Terminal (Short form kit containing keypad and reader module PCB. Requires external power supply).
--------	---

Touchscreen Terminal



Ideal for installations utilising building automation features, the Touchscreen Terminal presents the user with a 3.5", touch sensitive colour display and user-friendly, intuitive interface. The user interface can be tailored to site requirements by the installer.

Without having to 'log in' to the terminal, users can control building automation features such as lights and heating/cooling as well as specify the time these items stay on. It is possible to have some or all building automation features available only if a user submits a PIN to 'log in' to the Terminal. Security functions like arming and disarming the system require the user to input their PIN.

995022	Touchscreen Terminal (ivory)
995022CH	Touchscreen Terminal (charcoal)
995022NOTRIM	Touchscreen Terminal (ivory) – Fitted with adhesive for custom face plate
995022CNOTRIM	Touchscreen Terminal (charcoal) – Fitted with adhesive for custom face plate

Terminal Emulator



The Terminal Interface opens pathways for connection to and control of a Concept system by touch screens, embedded controllers and custom software applications using straightforward scripting.

The Terminal Interface operates by sending keystroke commands to the Concept system as an LCD Terminal does. In this way, authentication is still controlled by the Concept Control Module, greatly reducing application development time and cost.

995021	Terminal Interface
--------	--------------------

I/O Expansion & Lift Control

Universal Expander



The Universal Expander module provides an additional 16 zone inputs, 8 auxiliary outputs and 2 Siren drivers. This is expandable to 32 zone inputs and 32 auxiliary outputs. The Universal also supports advanced lift control features. Up to 64 Universal Expanders can be connected to a Control Module over the Concept LAN.

995004AU	Universal Expander with plug pack
995004AUPS	Universal Expander with transformer
995004PCB&K	Universal Expander short form kit

Mini Expander



The Mini Expander module provides an additional 8 zone inputs and 8 auxiliary outputs. Exclusive to the Mini Expander is a programmable de-bounce feature for increased sensitivity to inputs such as hold-up buttons, event counting and monitoring of electronic plant equipment. The input counting feature enables accurate monitoring of events and/or customer activity. Up to 99 Mini Expanders can be connected to a Control Module over the Concept LAN.

995086	Mini Expander in metal enclosure
995086PCB&K	Mini Expander and accessories. short form kit
995086PS	Mini Expander with power supply in metal enclosure

Add-ons for Universal and Mini Expanders

Expander Boards are available for the Universal Expander to add a further 16 zone inputs or 24 auxiliary outputs. Also for the Universal Expander are Lift Interface Boards to provide an interface to lift buttons. High and low voltage versions are available.

8 Relay Expander Boards are available for Universal and Mini Expanders. One 8 Relay Expander Board can be connected to a Mini Expander, whereas up to three Relay Expander Boards can be attached to a single Universal Expander.

995006	16 Zone Expander Board for Universal Expander with surge protection
995007	24 Auxiliary Expander Board for Universal Expander with surge protection
994020	Lift Interface Board for Universal Expander
994020HV	High Voltage Lift Interface Board for Universal Expander
995082E	8 Relay Expander Board – Expander Module Version
995019	Relay Extension Cable

RF Expander



The RF Expander Module provides connectivity to the Visonic range of wireless devices. The RF Expander Module allows seamless functionality for up to 32 wireless zone inputs and 4,000 users with key fobs. Wireless detectors reduce installation time and cost, whilst key fobs provide secure arming and disarming of the system as well as remote operation of outputs such as lighting and doors etc. A perfect solution for heritage listed buildings, detached structures and difficult installation points.

995020	RF Module in plastic enclosure
--------	--------------------------------

Access Control

Intelligent Four Door Access Module



The Intelligent 4 Door Access module is a four door, four reader access control module and has been specifically designed to meet the highest levels of system integrity and redundancy planning. The Intelligent 4 Door Access module effectively combines offline stand-alone operation with enhanced feature design.

The four door intelligent access module fully supports the advanced Concept access control features: i.e. soft / hard / timed anti-passback, dual user, card and PIN, free access via timezones etc. Card In / Card Out operation across four doors using 8 card readers can be achieved with the addition of the Reader Expander Board. Up to 64 Intelligent Four Door Modules can be connected to a single Control Module.

994012	Intelligent Four Door Access Module
995013	Reader Expander Board for Intelligent Four Door Access Module

Two Door Access Module



The 2 Door Access Module is an economical two door, two card reader access module. It can control two doors with two readers, or one door with in and out readers. Readers can be configured independently allowing mixed technologies on the one Module. The Two Door Access module fully supports the advanced Concept access control features: i.e. soft / hard / timed anti-passback, dual user, card and PIN, free access via timezones etc.

Where a measure of offline redundant access control is required, the Cached version of the 2 Door Access Module can be used. Up to 99 2 Door Access Modules can be connected to a single Control Module.

995012	2 Door Access Module metal enclosure
995012PS	2 Door Access Module and power supply in metal enclosure
995012CAPS	2 Door Access Module with with offline cache mode and power supply in metal enclosure
995012CAPCB&K	2 Door Access Module with with offline cache mode short form kit

Single Door Access Module



The Single Door Access Module is an economical one door, one card reader access module. It fully supports all of the advanced Concept access control features. Up to 99 Single Door Access Modules can be connected to a single Control Module.

995011PCB&K	1 Door Access Module short form kit
-------------	-------------------------------------

IP Four Door Access Controller



The IP 4 Door Controller provides an advanced network solution for fully integrated access control, security and building automation systems. This product combines all the I/O and processing requirements for access control, alarm monitoring and automation functions for up to 4 doors, 10 areas and 16 zones. Two additional 2 Door Access Modules can also be connected to provide control of up to 8 doors. "Programmable Site Code" is also supported.

Whilst the IP 4 Door Controller provides a competitive standalone solution for smaller sites, an unlimited number of IP 4 Door Controllers can be linked and managed as one system using the Insight software.

995002IPD	IP 4 Door Access Controller
995012PCB-01	2 Door Expansion Kit

Standalone Two Door Access Controller



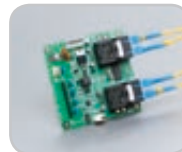
Designed for smaller applications, yet rich in features, the Standalone Two Door Access Controller is a powerful access control solution in an economical package. This device has capacity for 100 users and has a 64 event non-volatile event buffer. It boasts all of the access control features of the standard 2 Door Access Module, but is designed to operate without the need of a separate Control Module.

The Standalone 2 Door Access Module can be connected to a PC for setup and system management.

995012SA	Standalone Two Door Access Controller in plastic utility enclosure. Requires external power supply
995012SAPS	Standalone Two Door Access Controller in Small Low Profile Powered Enclosure. (Contains 2A Power Supply)
993036	Port 0 Cable and IRSDAC software
995112SAUP	Conversion kit. Converts Standalone Two Door Access Controller to a Concept 4000 Cached 2 Door Access Module

Miscellaneous

Fibre Modem



Inner Range Single Mode and Multimode Fibre Modems present a purpose built fibre optic solution designed specifically to work with Concept installations. The Inner Range Fibre Modem provides two separate, optically isolated ports to the Concept system LAN. A set of Fibre Modems are ideal for applications where modules in a Concept system are in different buildings and/or are separated by large distances. The Fibre Modems can work in loop or branch modes.

995081	Fibre Modem (Multimode)
995087	Fibre Modem (Single Mode)

LAN Isolator



The LAN Isolator affords a Concept system with optical isolation of LAN wiring with an optional LAN 'loop' mode. The elimination of electrical connection between LAN sections serves as a means to break earth loops as well as extending the length of the LAN.

In addition to this, the LAN Isolator monitors its LAN sections and can isolate sections of the LAN where problems are discovered. Also provided are outputs to indicate the status of the LAN allowing LAN section status and alarms to be reported as required.

995080	LAN Isolator in metal enclosure
995080PCB&K	LAN Isolator short form kit

Analogue Module



The Analogue module provides the capability to monitor, report and action on analogue values within a Concept system. This module can be programmed to operate an auxiliary when an analogue level from one or more of its independent analogue inputs exceeds or goes below a pre-programmed trigger point. Analogue levels can be monitored and/or controlled in scaled units at any LCD Terminal or remotely off-site.

Up to 99 Analogue Modules can be connected to a single Control Module.

995088	Analogue Module (Voltage Mode) in metal enclosure
995088C	Analogue Module (Current Mode) in metal enclosure
995088PCB&K	Analogue Module short form kit (Voltage Mode)
995089	Serial Temperature Sensor for Analogue Module

LAN Power Supply



The LAN Power Supply is a dual 2A supervised power supply producing 4A split evenly between system power and dedicated battery charging. Up to three additional LAN Power Supplies can be slaved to one LAN Power Supply. Each slave can be configured differently to tailor power output to system requirements. Ganged LAN Power Supplies come into their own in installations where express charging of large back up battery banks is needed.

995050AU	LAN Power Supply in metal enclosure
995050PCB	LAN Power Supply (PCB only)

2A Power Supply



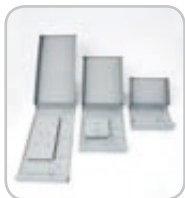
Specifically designed and tested for compatibility with proximity type reader heads, the 2A Power Supply can be used wherever battery backed 12V supplies are required to power Concept modules, detectors, readers and auxiliary devices such as strobes, sounders, locks, etc.

994055	Short form 2A Power Supply (PCB only)
--------	---------------------------------------

Power Supply Accessories

560007	3A transformer
999004	16VAC 1.5A plug pack (Allows 994055 to be used as a 1A power supply)
994053	16VAC 2.5A in-line plug pack
999000	IR Fuse Pack
605049	400mm cable for direct connection to 2 Door Access Module or Mini Expander

Enclosures & Accessories



Designed for our Concept 4000 Module PCBs, the Low Profile Metal Enclosures present a modular, application-oriented solution to suit a variety of installation requirements. The Low Profile Enclosures minimise necessary wall space and simply the practice of selecting and installing enclosures. Powered and un-powered versions of each kind of enclosure are available. Four sizes of mounting plates enable many combinations of associated module PCB types to be installed within the same enclosure.

To complement the Low Profile Metal Enclosures, there are a number of other enclosures to suit different purposes. Fittings to assist with installation are also available.

990045WH	Plastic Enclosure (Off White)
995200	Small Low Profile Enclosure
995200PE	Small Powered Low Profile Enclosure
995201	Medium Low Profile Enclosure
995201PE	Medium Powered Low Profile Enclosure
995203	Xtra Large Low Profile Enclosure
995203PE	Xtra Large Powered Low Profile Enclosure
999002	PCB Mounting Clip Pack

999005	IR Fixing Pack
926005	Universal Battery Bracket
926017	17AH Battery Bracket
990050	External Weather Resistant Terminal Housing
650003	Key Lock to suit Weather Resistant Housing
995512	2 Door Acc Mod Equipment Box

Interface Cables



A range of pre-assembled interface cables are available for connection to various serial devices and third party systems.

993009	DB9 Interface for Laptop
993025	DB25 Interface for PC's
993026	Printer Interface Cable
993027	Modem Interface Cable
993030	Port 0 Interface Cable
993031	MODBUS Port 0 Cable
993028	LAN Ancillary Cable
608204	FE3000 Programming Lead
993035	Securitel / SpreadNet® Cable
994091	GSM Modem Interface Cable
994092	FE3000/GSM Modem Interface Cable for FE3000
993013	C-Bus/HPM Interface Cable
993032	Dynalite Interface Cable

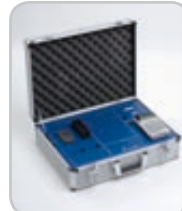
Surge Diverters



Where Concept 4000 hardware is installed in locations and environments where a very high level of electrical transient activity might be anticipated, the addition of Inner Range Advanced Surge Protection Devices adds a further layer of transient protection.

995040	Low Voltage AC and Battery Surge Diverter
995041	Inner Range LAN Surge Diverter
995042	PSTN (Telecom) Line Surge Diverter

Training & Demo Units



The portable Demonstration Units are an invaluable aid for demonstration, training or for prototyping. Fitted in a 'photographers case', the self-contained unit comprises of a Concept 4000 Control Module, Elite Terminal and 2 Door Access Module along with proximity and swipe readers. There are a number of three position switches connected to various inputs as well as LEDs to indicate status of outputs.

998050	General Briefcase Demo Unit
--------	-----------------------------

IR-Secure 40 Format Readers, Cards and Fobs



994700	IR Dual-format Prox Card Reader (Factory configured for IR-Secure 40 format)
994602	IR-Secure 40 Clamshell Prox Card*
994600	IR-Secure 40 ISO Prox Card*
994601	IR-Secure 40 Key Fob*
994602RS	IR-Secure 40 Clamshell Prox Card* (Registered Site)
994600RS	IR-Secure 40 ISO Prox Card* (Registered Site)
994601RS	IR-Secure 40 Key Fob* (Registered Site)

*Please consult Inner Range for more details prior to purchasing items marked with an asterisk.

Sundries

995083M	2 x 10A Relay Board (Connected strip of 8)	910034WH	Replacement Tamper Switch Actuator for Elite Terminal (White)
995083S	2 x 10A Relay Board	999002	CE Mounting Clip Pack
995084	8 x 5A Passive Relay Board	999005	IR Fixing Pack
995085	1 x 2A DPDT Relay Interface	999000	IR Fuse Pack
508001	Terminal blocks 2way	631022	Concept 4000 Programming Ref & Installation Manual
508002	Terminal blocks 8way	630026	Concept 4000 User Manual
995910	LAN Hub Board 8way with DET+ & 0V Hub	990010	Swipe Card Reader
995911	LAN Hub Board (breakaway version)	650001	2000 Magnetic Swipe card
910034	Replacement Tamper Switch Actuator for Elite Terminal (Ivory)	993011	3000 / 4000 Magnetic Swipe card - (Programmable Site Code)



Health - Royal Prince Alfred Hospital

Royal Prince Alfred Hospital has come a long way it since it opened as a 146-bed hospital and received its first patients in 1882. Over 100 years later, it specialises in cardiology, obstetrics and gynaecology, oncology, respiratory medicine, neurology, as well as liver and kidney transplants.



The 3,000 users need a robust access control solution that they can rely on in life-and-death situations.

There are 70 Intelligent 4 Door Access Modules, and many 1 and 2 Door Access Modules controlling access to over 300 doors throughout the site, with significant expansion projected in future years.

Multiple Concept 4000 Control Modules are connected with system management client/server software that also enables design and printing of cards using the Photo ID Module. Another software module enables the activation of hard-wired and wireless duress buttons to send messages to pagers.

Several LAN Isolators regenerate the signal in long cable runs throughout the hospital site and also provide isolation between LAN sections in the event of lightning-strike, cable-cut etc.

The IR system also controls several critical lifts including the lift to the helicopter landing pad and the emergency lift.

As RPA continues to grow, the Hospital can be secure in the knowledge that they have invested in a powerful and reliable security solution today that will still accommodate their needs for many years to come.

Major Residential - World Tower Apartments

The 637 apartments in the 75 storey World Tower dominate the skyline even in the Sydney CBD. The Australian Prime Minister opened the tallest residential apartment building in the Southern Hemisphere which prides itself on the 'World Class Security' offered to tenants.



Four Concept 4000 control modules are used throughout the building, connected together with system management software. Concept 4000 controls access to over 100 doors with over 2000 users and 100 user types.

Tenants use key fobs for wireless entry to ten car park entries over five levels. Twelve lifts servicing three separate tiers of the building are controlled by three IR Modules. Button-feedback alerts users when they select floors for which they don't have access to.

Panic buttons linked to the Concept 4000 module are sent via low-level interfacing to Matrix CCTV stations and DVRs to monitor and record images from 133 CCTV cameras in critical areas such as car parks, entries and lift lobbies.

The Concept 4000 is also integrated with the Urmet Domus Digivoice Intercom system for lift release. Additionally over 50 inputs including water supply, air-conditioning and pumps are monitored in the building plant rooms.

Throughout the huge building, Concept 4000 undertakes an amazing array of critical functions both in its own right and in conjunction with other premium technology platforms.

Inner Range are world leaders in the design and manufacture of state of the art security solutions.

Since our inception in 1988, over 50,000 Inner Range systems have been installed in over thirty countries.

Amidst impressive growth, Inner Range has remained focused on what it does best: the integration of intruder alarm and access control functionality.

Consumers are increasingly demanding integrated solutions in the implementation of building management technology. Inner Range equipment delivers an impressive mix of power and flexibility which consistently out performs its more expensive competitors.

Consultants who specify our products, technicians who install them and consumers who use them all benefit on a daily basis from the pursuit of excellence that is the hallmark of Inner Range system design.

Cost effective scalability, programming flexibility, powerful logic and third party compatibility are just some of the compelling reasons to choose an Inner Range solution.



Facts at a glance:

- World leader in integrated intruder, access control and building automation systems
- Established 1988
- More than 50,000 systems sold worldwide in over 30 countries
- Head Office in Melbourne, Australia
- Inner Range Europe office based in Reading, UK

Why Inner Range?

Focus and passion

Inner Range is a privately owned company with the owners and senior staff sharing a lifelong passion and commitment to the electronic security industry.

Our sole purpose is the development of the world's leading hardware and software solutions for the intruder and access markets.

Commitment to Innovation

Inner Range has always demonstrated an unwavering commitment to Research and Development. This commitment pays dividends to our customers through the creation of products that result in more cost-effective and efficient ways to manage their facilities.

Responsiveness

A desire to listen to our customers and respond quickly and effectively is an ethic that is deeply ingrained in our company's culture. We have a hard earned reputation of working closely with our customers to deliver effective, tailored solutions.



Outstanding Technical Support and Training

Wherever Inner Range sells its products in the world, the first thing we put in place is our comprehensive technical support infrastructure. Our high quality technical support staff and factory certified training ensures systems can be specified, quoted, installed and maintained with utmost confidence.

Australia: Inner Range Pty Ltd

1 Millennium Court
Knoxfield Victoria, 3180 Australia
Tel: +61 3 9753 3488
Fax: +61 3 9753 3499
email: admin@innerrange.com

Europe: Inner Range (Europe) Ltd

Units 10 & 11
Theale Lakes Business Park
Moulden Way
Sulhampstead
Reading, Berkshire, RG7 4GB
United Kingdom
Tel: +44 (0)118 957 5055
Fax: +44 (0)118 957 5088
email: ineurope@innerrange.com

Distributed By: